

This PDF file is subject to the following conditions and restrictions:

Copyright © 2006, The Geological Society of America, Inc. (GSA). All rights reserved. Copyright not claimed on content prepared wholly by U.S. government employees within scope of their employment. Individual scientists are hereby granted permission, without fees or further requests to GSA, to use a single figure, a single table, and/or a brief paragraph of text in other subsequent works and to make unlimited copies for noncommercial use in classrooms to further education and science. For any other use, contact Copyright Permissions, GSA, P.O. Box 9140, Boulder, CO 80301-9140, USA, fax 303-357-1073, editing@geosociety.org. GSA provides this and other forums for the presentation of diverse opinions and positions by scientists worldwide, regardless of their race, citizenship, gender, religion, or political viewpoint. Opinions presented in this publication do not reflect official positions of the Society.

Nd and Sr isotopic data from argillaceous rocks of the Galice Formation and Rattlesnake Creek terrane, Klamath Mountains: Evidence for the input of Precambrian sources

Carol D. Frost*

*Department of Geology and Geophysics, Dept. 3006, 1000 East University Avenue,
University of Wyoming, Laramie, Wyoming 82071, USA*

Calvin G. Barnes

Department of Geosciences, Texas Tech University, Lubbock, Texas 79409-1053, USA

Arthur W. Snoke

*Department of Geology and Geophysics, Dept. 3006, 1000 East University Avenue,
University of Wyoming, Laramie, Wyoming 82071, USA*

ABSTRACT

Nd and Sr isotopic data are presented for argillaceous rocks from two terranes in the Klamath Mountains: the western Klamath terrane and Rattlesnake Creek terrane. In the collage of terranes exposed in the Klamath Mountains, these terranes are located farthest outboard from the North American craton and include (meta)igneous rocks of clear oceanic affinity. Nevertheless, the argillaceous rocks from these terranes preserve a strong isotopic signal of terrigenous sedimentary input. The lowermost portion of the Rattlesnake Creek terrane, the serpentinite-matrix mélangé, is interpreted to have formed within an oceanic fracture zone. The argillaceous sediment incorporated into this tectonic assemblage was probably derived partly from eolian dust eroded from the continents and partly from local juvenile detritus shed from topographic highs along the fracture zone. The Upper Triassic–Lower Jurassic “cover sequence” of the Rattlesnake Creek terrane has been interpreted as an oceanic-arc assemblage, but the argillaceous rocks of the cover sequence have the most negative ϵ_{Nd} (–8.3) and radiogenic $^{87}Sr/^{86}Sr$ (0.7114) of any samples analyzed in this study. We infer that cratonic sediment was delivered to the depocenter of the Rattlesnake Creek terrane arc, probably transported by river systems. This situation suggests proximity to a continental landmass during arc magmatism. The Galice Formation, a thick turbiditic sequence above the Late Jurassic Josephine ophiolite, appears to be composed of detritus shed from both the Rogue–Chetco oceanic arc on the west (in present geographic coordinates) and previously accreted Klamath Mountains terranes and/or North American craton to the east. The continental isotopic signal is stronger in the argillaceous rocks than in the (meta)graywackes, suggesting that the finer-grained rocks contain a greater proportion of cratonic debris, material that may have been

*E-mail: frost@uwyo.edu.

Frost, C.D., Barnes, C.G., and Snoke, A.W., 2006, Nd and Sr isotopic data from argillaceous rocks of the Galice Formation and Rattlesnake Creek terrane, Klamath Mountains: Evidence for the input of Precambrian sources, *in* Snoke, A.W., and Barnes, C.G., eds., *Geological studies in the Klamath Mountains province, California and Oregon: A volume in honor of William P. Irwin*: Geological Society of America Special Paper 410, p. 103–120, doi: 10.1130/2006.2410(05). For permission to copy, contact editing@geosociety.org. ©2006 Geological Society of America. All rights reserved.

reduced to mud-sized particles during sediment recycling. The presence of continental-derived sediment in these otherwise ensimatic terranes indicates that although continental crustal growth by accretion of oceanic terranes is an important process, such accreted terranes commonly are not composed entirely of juvenile crust.

Keywords: Nd isotopes, continental crustal growth, Rattlesnake Creek terrane, western Klamath terrane, Galice Formation, Jurassic

INTRODUCTION

An important mechanism of continental crustal growth during at least the past 2.5 billion years is accretion of juvenile terranes of oceanic affinity to the margins of continents. Large amounts of juvenile crust have been documented within the 1.95- to 1.65-Ga terranes of North America, Greenland, and northern Europe, 1.2- to 1.0-Ga Grenville orogenic belt, Arabian-Nubian shield, and the Proterozoic crust of Australia (see Samson and Patchett, 1991, and references therein). Phanerozoic examples of crustal addition by terrane accretion include the western North American Cordillera (Coney et al., 1980; Silberling et al., 1987; Armstrong, 1988; Samson and Patchett, 1991; Creaser et al., 1997; Patchett and Gehrels, 1998; Unterschutz et al., 2002), Appalachians (e.g., Secor et al., 1983), New Zealand (Frost and Coombs, 1989), and other less well-documented examples. Nd and Sr isotopic studies in the Canadian Cordillera and New Zealand have shown that parts of these collages include terranes that are composed almost entirely of oceanic rocks that formed from mantle sources, such as Stikine, Wrangellia, and Alexander terranes of the Canadian Cordillera and Brook Street terrane of New Zealand. As such, these terranes provide unequivocal evidence for Phanerozoic continental crustal addition. Other terranes within these collages are composed of rocks that reflect a mixture of juvenile and continental sources, and modeling the amount of continental crustal growth represented by these terranes is complex.

The Klamath Mountains of northwestern California and southeastern Oregon preserve a collage of tectonostratigraphic terranes of oceanic affinity and thus are a significant site of Phanerozoic crustal growth in the U.S. Cordillera. Isotopic studies of intrusive igneous rocks of the Klamath Mountains show that these magmatic rocks are juvenile (e.g., Paleozoic plutons in the eastern Klamath terrane: Petersen et al., 1991; Wallin and Metcalf, 1998; Middle Jurassic Ironside Mountain batholith: Barnes et al., this volume, Chapter 10) or have significant juvenile components (e.g., late Middle Jurassic "Wooley Creek belt" plutons; Masi et al., 1981; Barnes et al., 1990, 1992a, 1995; Gribble et al., 1990). However, isotopic data from (meta)sedimentary rocks of the terranes in the Klamath Mountains are also critical in terrane affinity and accretion history. Even in terranes that chiefly include isotopically juvenile igneous rocks, the (meta)sedimentary rocks may have more complex provenance that includes substantial recycled crustal components (e.g., Patchett and Gehrels, 1998).

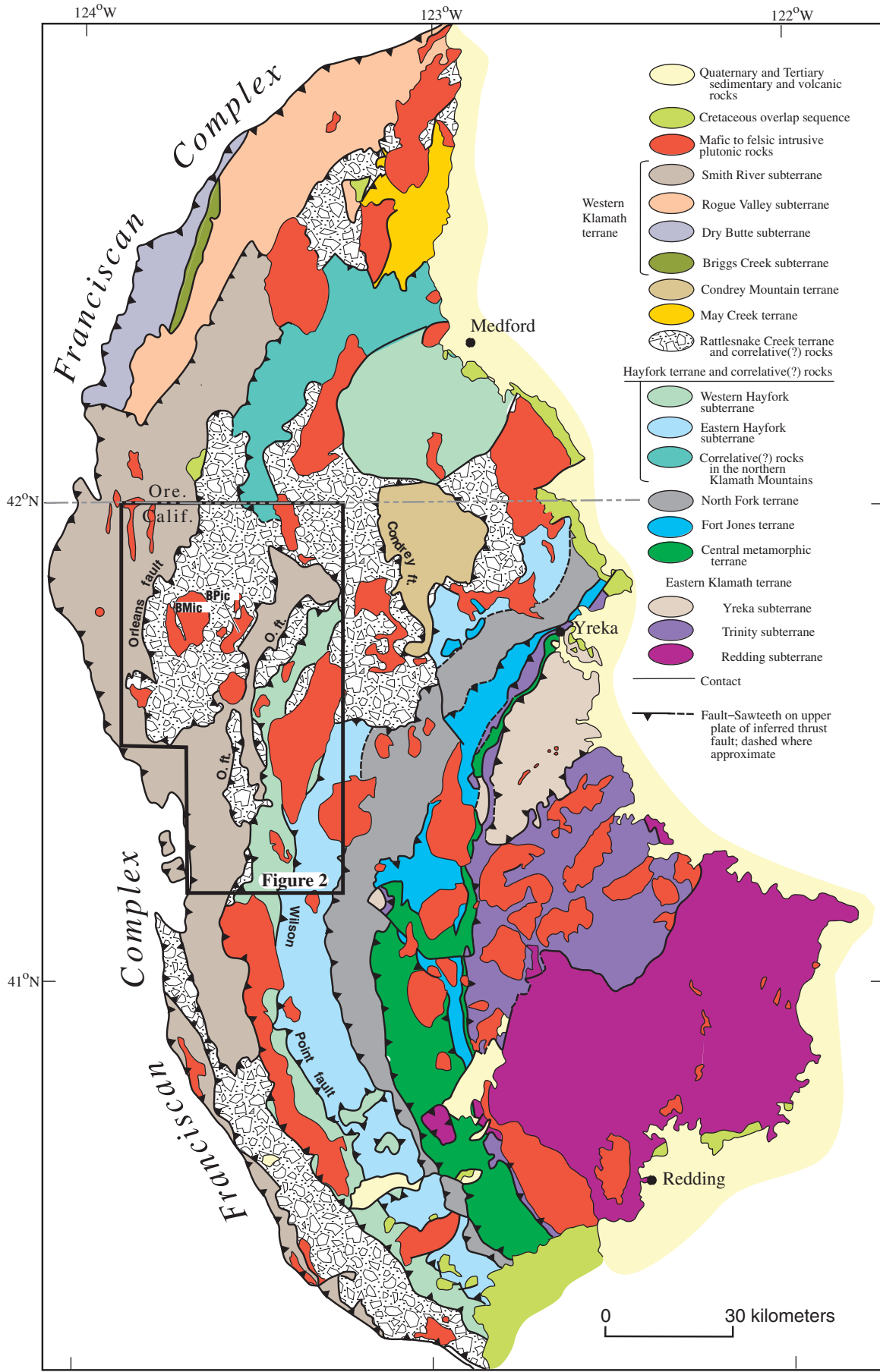
The present study provides the first extensive Sr and Nd isotopic data set for metasedimentary rocks from the Klamath Mountains. We have chosen to focus on two of the terranes that lie farthest outboard from the North American craton, which are composed almost entirely of rocks of clear oceanic affinity. The first, the western Klamath terrane, includes the Josephine ophiolite and overlying turbiditic sequence of the Upper Jurassic Galice Formation. The second, the Rattlesnake Creek terrane, has been interpreted as initially forming in an oceanic fracture zone setting upon which a younger (Late Triassic–Early Jurassic) oceanic arc was built. As such, both settings are candidate sites of new crust formation. Nevertheless, our results show that sediment of continental origin is present in argillaceous rocks of both terranes. The presence of continental detritus in these oceanic terranes is significant in terms of the paleogeographic and tectonic positions of the terranes, the origins of their detrital sediments, and their contribution to Phanerozoic continental crustal growth.

GEOLOGIC SETTING

The Klamath Mountains of northwestern California and southwestern Oregon are a tectonic collage of tectonostratigraphic terranes of oceanic affinity imbricated along regional thrust faults (Irwin, 1972, 1994). Roughly, the age of thrust faulting is younger from east to west (Fig. 1), from the mid-Paleozoic through the Late Jurassic (Davis et al., 1978; Irwin and Wooden, 1999). During the Early Cretaceous, the westernmost thrust, the South Fork fault, emplaced the Klamath Mountain province above Jurassic and Cretaceous rocks of the Coast Ranges, including the South Fork Mountain Schist of the Pickett Peak terrane. Argillaceous rocks are abundant in many of the terranes of the Klamath Mountains and are especially widespread in the Upper Jurassic Galice Formation of the western Klamath terrane as well as within the Rattlesnake Creek terrane.

The argillaceous rocks of both the Galice Formation and Rattlesnake Creek terrane apparently formed in close spatial and temporal association with oceanic arcs, but in contrasting

Figure 1. Geologic sketch map of the tectonostratigraphic terranes of the Klamath Mountains province, California and Oregon. The area of Figure 2 is outlined. BMic—Bear Mountain intrusive complex, BPic—Bear Peak intrusive complex. Modified from Irwin (1994).



settings with regard to coeval arc magmatism. The Galice Formation is a thick Upper Jurassic turbidite sequence above the Late Jurassic Josephine ophiolite and equivalent sequences (e.g., Devils Elbow ophiolite remnant; Wyld and Wright, 1988). In the Oregon Klamath Mountains, the Galice Formation interfingers with volcanogenic rocks of the Rogue–Chetco oceanic arc (Garcia, 1979; Harper, 1983), which is also stratigraphically above the Josephine ophiolite. The age of the Galice Formation is constrained to be younger than the youngest population of detrital zircons it contains (ca. 153 Ma; Miller et al., 2003), yet older than the 151 ± 2 - and 150 ± 2 -Ma dikes that intrude it (Saleeby et al., 1982). Paleontological data indicate that the Galice Formation is Middle Oxfordian–Lower Kimmeridgian, based on *Buchia concentrica* (Sowerby) (Diller, 1907; Imlay, 1959, 1980). The depositional setting of the Galice Formation has been commonly interpreted to be in an inter-arc or back-arc basin (Snoke, 1977; Harper, 1980; Harper and Wright, 1984), and the structural development of this basin may be related to transtensional deformation within an older, west-facing, oceanic-arc terrane (Harper et al., 1985). This rifted, older arc terrane includes Rattlesnake Creek terrane basement (Donato et al., 1996; Yule, 1996), the Middle Jurassic western Hayfork arc sequence, and late Middle Jurassic calc-alkalic plutons (e.g., Barnes et al., 1992b). In this light, the source of Galice detritus could be from the rifted older arc and/or late Middle Jurassic igneous rocks, the coeval arc (Rogue–Chetco arc), or from still older previously accreted terranes of the Klamath Mountains.

The provenance of Galice detritus was first addressed by Snoke (1977), who studied the petrography of the metagraywackes of the Galice Formation, including the detrital, heavy-mineral assemblage. Snoke (1977) concluded that a substantial amount of the detritus in the metagraywackes of the Galice Formation could be derived from older, more easterly terranes of the Klamath Mountains. This conclusion was supported by Harper (1983, 1984) and Park-Jones (1988), who also noted a diverse heavy mineral assemblage as well as paleocurrent indicators of eastward derivation of the bulk of the detritus. These authors also recognized juvenile volcanoclastic debris presumably derived from the coeval Rogue–Chetco oceanic arc, west of the Galice basin.

In the southwestern Klamath Mountains, Wright and Wyld (1986) reported xenocrystic zircon in plagiogranite of the Devils Elbow ophiolite remnant (the southern continuation of the Josephine ophiolite). This finding was the first evidence of recycled cratonic detritus in a Klamath Mountain ensimatic environment, in this case, a supra-subduction ophiolite. Miller and Saleeby (1987, 1995) then showed that metagraywackes of the Galice Formation contain detrital Precambrian zircons with an average upper intercept of 1583 Ma, with the oldest $^{207}\text{Pb}/^{206}\text{Pb}$ age at 2079 Ma. Recently, Miller et al. (2003) also found sparse Precambrian detrital zircons in the metagraywackes of the Galice Formation using ion probe U-Pb dating. In summary, a substantial body of diverse data links the tectonic setting of the Galice Formation to previously accreted terranes of the Klamath

Mountains and to the coeval fringing Rogue arc. Detrital zircon geochronologic studies establish these same links, but also indicate the presence of Precambrian-age detritus whose origins are uncertain.

In contrast to the Galice Formation, little is known about the provenance of Rattlesnake Creek terrane metasedimentary rocks. The Rattlesnake Creek terrane was defined by Irwin (1972) as an ophiolitic *mélange*. However, Wright and Wyld (1994) recognized a pseudostratigraphy within the terrane, consisting of a disrupted oceanic assemblage (serpentinite-matrix *mélange*) overlain by coherent Upper Triassic and Lower Jurassic meta-volcanic and metasedimentary rocks, which they referred to as a “cover sequence.” The contact between the underlying serpentinite-matrix *mélange* and overlying cover sequence was interpreted as an unconformity, although this contact is commonly overprinted by brittle faulting. Wright and Wyld (1994) also documented a diverse suite of intrusive rocks (gabbroic to quartz dioritic) that intrude the *mélange* and cover sequence; these plutonic rocks range in age from 207 to 193 Ma (U-Pb zircon).

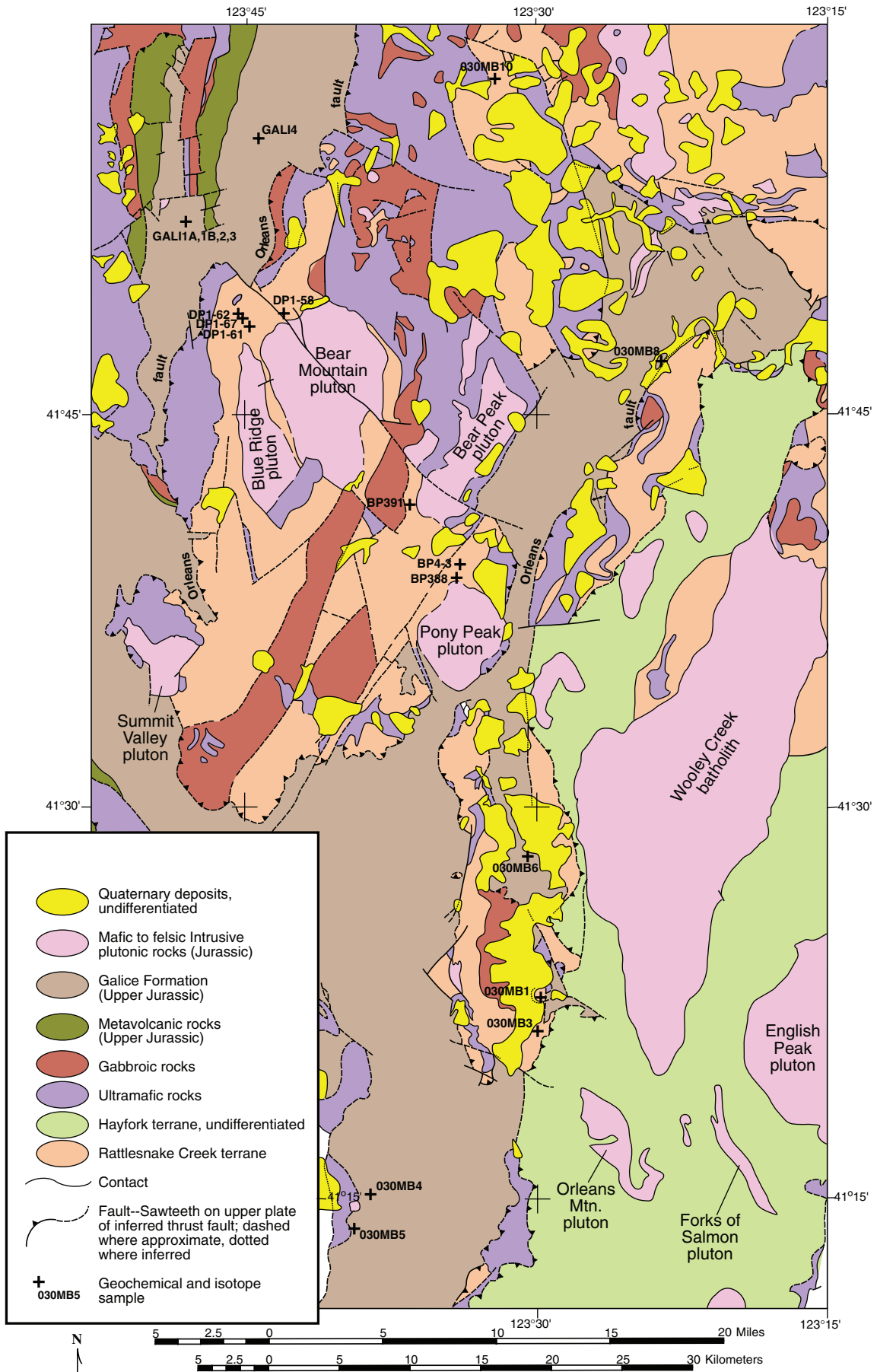
Wright and Wyld (1994) argued that the serpentinite-matrix *mélange* unit formed in an oceanic fracture zone setting, whereas the overlying coherent cover sequence is an oceanic-arc sequence related to eastward-dipping subduction. The paleogeographic setting of this oceanic arc was inferred to be near western North America on the basis of terrigenous detritus in Rattlesnake Creek terrane wackes, arenites, and coarser-grained detrital rocks.

In summary, the Galice Formation and Rattlesnake Creek terrane are assemblages of rocks that clearly developed in oceanic or ensimatic settings. However, both units also appear to reflect proximity to a continental margin that was a source of terrigenous sedimentary input, including sediments with ancient cratonic origins.

SAMPLES

Geochemical and isotopic data were obtained on nine argillaceous rock samples from the Galice Formation and ten meta-argillite samples from the Rattlesnake Creek terrane. Sample locations were chosen to provide a broad geographic distribution and are summarized in Figure 2 with geographic coordinates listed in the Appendix. We also attempted to obtain samples from different stratigraphic levels within these units, but complex folding and faulting preclude a detailed determination of stratigraphic position.

Figure 2. Generalized geologic map of the north-central Klamath Mountains, California, showing the approximate locations of samples analyzed in this study. The base for this sample-location map is Wagner and Saucedo (1987).



Galice Formation

Argillaceous rocks from the Galice Formation are typically dark gray to black slates to phyllites, locally pyrite bearing. The samples are listed in Tables 1 and 2 from north to south, geographically. Sample GALI4 was collected in the drainage of the Middle Fork of the Smith River, whereas GALI1A–3 were collected in the Siskiyou Fork of the Smith River. These samples appear to represent structurally, and presumably, stratigraphically, the upper part of the Galice Formation. Sample 03OMB6 was collected along California State Highway 96 near the entrance to the Marble Mountain Ranch. Sample 03OMB4 was also collected along California State Highway 96, south of Orleans near the confluence of Slate Creek with the Klamath River; and 03OMB5 was collected along the Klamath River near the Aikens Creek campground. Both 03OMB4 and 03OMB5 are interpreted as samples near the base of the Galice Formation, and metabasaltic rocks correlated with part of the Late Jurassic Josephine ophiolite underlie the Galice Formation south of Aikens Creek campground along the Klamath River.

Sample 03OMB8 is a crenulated, graphitic phyllite from the confluence of Little Grider Creek with the Klamath River, south of the town of Happy Camp, California. The outcrop was mapped as Galice Formation by Klein (1975, 1977) and Petersen (1982) but is surrounded by Quaternary deposits. The Orleans fault or an equivalent structure lies immediately to the east of the locality; the hanging-wall block consists of a diverse suite of rocks of the Rattlesnake Creek terrane, including ultramafic and mafic rocks metamorphosed at upper greenschist- to lower amphibolite-facies conditions (Petersen, 1982). Interestingly, Klein (1977), Hill (1985), and Saleeby and Harper (1993) show complex faulting in this area with thrust slices of different lithologic character. In Figure 2 of Hill (1985), a thrust slice of rocks correlated with the Condrey Mountain terrane (Hotz, 1979; Helper, 1986) is shown sandwiched between structurally overlying rocks of the Rattlesnake Creek terrane and structurally underlying rocks of the Galice Formation (western Klamath terrane). Likewise, a regional cross-section through the area (Saleeby and Harper, 1993, their Fig. 2) shows multiple thrust slices of rocks perhaps equivalent to the Condrey Mountain terrane in the same structural position. Thus, sample 03OMB8 was collected in a structurally complex zone near a major, regional thrust fault, and its terrane affinity is not certain. This sample may be part of the Galice Formation as previously mapped (Klein, 1975, 1977; Petersen, 1982); however, it could conceivably be a rock unit related to the older Condrey Mountain terrane. Another possibility, based strictly on the phyllitic nature of the sample, is a correlation with the South Fork Mountain Schist of the Pickett Peak terrane. However, such a correlation would require the imbrication of the Pickett Peak terrane *above* the western Klamath terrane, a relationship not reported at any other locality in the Klamath Mountains.

Rattlesnake Creek Terrane

Samples from the Rattlesnake Creek terrane were chosen to include meta-argillite from blocks within the serpentinite-matrix mélangé as well as argillaceous units that form part of the stratigraphy of coherent metavolcanic and metasedimentary sequences (i.e., “cover sequences” after the usage of Wright and Wyld, 1994). In the west-central Klamath Mountains, Snoke (1977) mapped a distinctive conglomerate-grit unit, characterized by a diverse suite of clasts (see his Figs. 9 and 10, p. 1652). This unit is part of a coherent metavolcanic and metasedimentary sequence (his Bear Basin Road sequence), which is now considered to be a Rattlesnake Creek terrane cover sequence (Bushey et al., this volume). Several of our meta-argillite samples (DP1-58, 61, 62, and 67) from the Rattlesnake Creek terrane were collected from this unit. Other cover sequence samples include BP4-3 and BP388, collected north of the Pony Peak pluton (Fig. 2). Samples from interpreted mélangé blocks include 03OMB10, collected ~1 km south of Little Grayback Mountain; BP39, a contact metamorphosed black argillite collected 0.5 km west of the Bear Peak pluton; 03OMB1 from the southeast side of Sugarloaf Mountain near the confluence of the Salmon and Klamath Rivers; and 03OMB3, collected along California State Highway 96 ~7.5 km north of Orleans, California.

RESULTS

Methods

Bulk geochemical analysis was performed at Texas Tech University by inductively coupled plasma-atomic emission spectroscopy for major elements, plus Sr, Zr, Y, Nb, Ba, Sc, Cu, Cr, and Zn. Rb was analyzed by flame emission. Nd and Sr isotopic compositions were determined at the University of Wyoming by thermal ionization mass spectrometry. Concentrations of Sm, Nd, Rb, and Sr were determined by isotope dilution on aliquots of the same sample dissolved for isotope ratio measurements. Further analytical details are given in the footnotes to Tables 1 and 2.

Geochemical Data

Galice Formation and Rattlesnake Creek terrane samples have geochemical compositions typical of argillaceous rocks (Table 1), characterized by high alumina contents (all but two samples have Al₂O₃ between 12 and 17 wt. %). As expected, Galice argillaceous rocks have higher Al₂O₃ and lower SiO₂ contents than found in Galice Formation metagraywackes (see MacDonald et al., this volume). Although their geochemical compositions overlap considerably, it is possible to distinguish argillaceous rocks of the Galice Formation from the meta-argillites of the Rattlesnake Creek terrane. As shown in Figure 3, argillaceous rocks of the Galice Formation have generally

TABLE 1. GEOCHEMICAL DATA FOR ARGILLACEOUS ROCKS OF THE KLAMATH MOUNTAINS, CALIFORNIA

Sample	Rattlesnake Creek terrane argillites, deposited ca. 210 Ma															Melange blocks									
	Galice argillites, deposited 153 Ma															Cover sequence					Melange blocks				
	GALI4	GALI1A	GALI1B	GALI2	GALI3	030MB6	030MB4	030MB5	030MB8	DP1-58	DP1-61	DP1-62	DP1-67	BP4-3	BP388	030MB10	BP391	030MB1	030MB3						
SiO ₂	60.46	60.60	60.10	59.87	67.30	61.95	62.00	63.77	63.82	68.87	65.38	75.85	81.71	68.45	69.81	66.06	61.23	63.12	65.70						
TiO ₂	0.82	0.75	0.72	0.78	0.62	0.78	0.81	0.84	0.66	0.78	0.68	0.60	0.28	0.60	0.82	0.67	1.03	0.93	0.67						
Al ₂ O ₃	16.98	15.82	14.74	15.82	12.13	16.01	16.62	17.12	13.90	12.49	13.45	10.00	6.18	12.99	12.55	13.48	16.19	12.84	13.72						
Fe ₂ O ₃	7.27	8.68	5.34	7.90	8.18	7.31	7.03	4.62	7.10	6.46	6.11	4.68	4.59	5.77	5.80	5.92	6.94	7.65	6.77						
MnO	0.04	0.07	0.03	0.04	0.04	0.06	0.10	0.04	0.08	0.05	0.06	0.04	0.05	0.13	0.11	0.07	0.23	0.37	0.07						
MgO	2.92	3.44	2.36	3.20	3.42	3.46	3.83	2.56	3.26	2.69	3.39	2.42	2.31	2.66	2.68	3.28	2.90	5.52	3.41						
CaO	0.21	0.95	0.13	0.54	0.59	1.40	0.94	0.86	2.02	0.88	1.76	0.82	0.62	1.62	0.86	0.94	2.52	1.29	1.28						
Na ₂ O	1.35	1.99	1.76	1.88	1.30	2.01	1.13	2.30	1.93	1.13	1.95	0.56	0.75	1.97	1.08	2.19	3.83	1.75	0.98						
K ₂ O	3.39	2.39	2.56	2.43	1.54	2.64	2.79	3.15	1.97	2.86	3.20	2.39	1.49	2.54	3.19	2.64	2.67	1.65	3.28						
P ₂ O ₅	0.21	0.70	0.14	0.27	0.60	0.18	0.19	0.19	0.19	0.08	0.19	0.07	0.04	0.20	0.06	0.20	0.22	0.14	0.25						
LOI	6.31	5.20	7.23	5.83	4.18	5.09	4.71	4.57	5.39	2.96	1.17	1.93	1.31	2.41	3.08	4.15	2.25	4.44	3.73						
TOTAL	99.95	100.60	95.11	98.56	99.89	100.89	100.15	100.02	100.32	99.25	97.33	99.36	99.34	99.34	100.04	99.60	100.01	99.70	99.85						
Rb	107	75	80	78	47				113	98	98	80	51												
Sr	78	161	85	111	98	151	179	155	125	52	52	70	100	327	89	188	424	76	40						
Zr	172	147	221	154	145	179	162	192	145	139	135	135	99	116	158	128	185	135	121						
Y	27	33	23	26	29	26	21	27	25	15	15	20	18	23	22	22	24	26	22						
Nb	10	6	6	7	7	9	9	10	8	11	11	6	4	7	11	6	9	9	7						
Ba	1341	885	907	965	586	1085	815	1017	846	1203	1322	491	2038	975	975	1738	1120	747	645						
Sc	21	22	15	22	17	18	21	17	16	17	17	14	11	19	17	21	23	23	21						
V	203	177	158	217	155	141	172	190	98	147	85	71	173	173	129	330	170	176	200						
Cr	99	97	105	110	95	95	89	93	66	108	108	65	36	50	60	104	44	94	112						
Ni						31	55	4	31					30	22	4	32	67	47						
Cu	40	85	23	65	24	37	24	11	88	72	72	76	167	51	96	24	138	2	56						
Zn	100	189	83	140	161	148	175	143	122	161	123	153	153	131	138	89	279	189	225						
Be	5	4	4	4	3				5	5	5	5	0												

Notes: Samples were fused in lithium metaborate and dissolved in 50 ml of 5% HCl solution for inductively coupled plasma-atomic emission spectroscopy and flame emission analysis. Relative uncertainties at the 95% confidence level are <1% for Si and Al; <2% for V; <3% for Ti, Fe, Mn, Ca, Na, Sr, Ba, and Zr; <5% for K, Mg, Y, and Rb; <10% for P, Sc, Cu and Zn; and <15% for Nb, Cr, and Ni. LOI—loss on ignition.

TABLE 2. Nd AND Sr ISOTOPIC DATA FOR ARGILLACEOUS ROCKS OF THE KLAMATH MOUNTAINS, CALIFORNIA

Sample	Rb (ppm)	Sr (ppm)	⁸⁷ Rb/ ⁸⁶ Sr	⁸⁷ Sr/ ⁸⁶ Sr (153 Ma)	⁸⁷ Sr/ ⁸⁶ Sr (210 Ma)	Sm (ppm)	Nd (ppm)	¹⁴⁷ Sm/ ¹⁴⁴ Nd	¹⁴³ Nd/ ¹⁴⁴ Nd	¹⁴³ Nd/ ¹⁴⁴ Nd (153 Ma)	Initial ε _{Nd} (153 Ma)	¹⁴³ Nd/ ¹⁴⁴ Nd (210 Ma)	Initial ε _{Nd} (210 Ma)	Nd model age (Ga)
Galice argillites, deposited 153 Ma														
Gali 4	98.45	70.30	4.0554	0.71575	0.706934	3.925	20.67	0.11484	0.512427	0.512312	-2.5	0.512409	-6.48	1.12
Gali 1A	42.93	114.95	1.0809	0.70912	0.706765	5.298	23.09	0.13872	0.512497	0.512359	-1.6	0.511944	-8.26	1.33
Gali 1B	48.57	64.79	2.1703	0.71130	0.706579	3.354	18.33	0.11068	0.512505	0.512394	-0.9	0.512013	-6.92	0.96
Gali 2	48.92	84.82	1.6697	0.71051	0.706875	3.021	14.06	0.13000	0.512467	0.512337	-2.0	0.512136	-4.52	1.25
Gali 3*	29.64	97	0.8895	0.70908	0.707144	5.436	23.89	0.13760	0.512511	0.512373	-1.3	0.512385	0.34	1.28
03OMB6	87.66	150.93	1.6811	0.70958	0.705925	5.296	27.58	0.11612	0.512504	0.512387	-1.1	0.512409	0.80	1.01
03OMB4	94.55	181.75	1.5057	0.70920	0.705930	4.351	23.90	0.11008	0.512437	0.512327	-2.2	0.512275	-1.80	1.05
03OMB5	112.46	159.34	2.0427	0.70950	0.705059	5.329	24.55	0.13126	0.512509	0.512378	-1.2	0.512255	3.65	1.19
03OMB8 [§]	59.54	82.21	2.0967	0.71260	0.708044	5.189	26.10	0.12023	0.512201	0.512080	-7.0	0.512065	-5.91	1.55
Rattlesnake Creek terrane argillites, deposited ca. 210 My														
Cover sequence														
DP1-58	91.09	126.13	2.0913	0.71404	0.709491	5.181	30.78	0.10178	0.512166	0.512064	-7.4	0.512026	-6.67	1.34
DP1-61	77.78	178.34	1.2627	0.71270	0.709955	5.230	29.21	0.10825	0.512093	0.511985	-8.9	0.511944	-8.26	1.53
DP1-62	48.90	42.66	3.3217	0.72131	0.714083	2.335	11.48	0.12300	0.512182	0.512059	-7.5	0.512013	-6.92	1.63
DP1-67	32.09	71.64	1.2969	0.71238	0.709560	2.383	10.48	0.13744	0.512325	0.512188	-4.9	0.512136	-4.52	1.67
BP4-3	99.53	485.65	0.5931	0.70733	0.706040	5.790	26.95	0.12991	0.512563	0.512433	-0.2	0.512385	0.34	1.07
BP388	114.74	88.91	3.7381	0.71747	0.709337	4.013	21.15	0.11474	0.512223	0.512108	-6.5	0.512065	-5.91	1.43
Melange blocks														
03OMB10	77.13	200.80	1.1116	0.70869	0.706273	4.926	22.59	0.13188	0.512590	0.512458	0.3	0.512409	0.80	1.05
BP391	85.32	419.55	0.5885	0.70786	0.706578	3.897	17.46	0.13495	0.512793	0.512658	4.2	0.512607	4.68	0.69
03OMB1	54.01	84.48	1.8508	0.71078	0.706754	5.419	25.42	0.12892	0.512453	0.512324	-2.3	0.512275	-1.80	1.26
03OMB3	76.87	37.27	5.9749	0.71796	0.704965	5.576	26.53	0.12712	0.512729	0.512602	3.1	0.512555	3.65	0.74

Notes: Approximately 80 to 100 mg of each sample was dissolved in HF-HNO₃. After conversion to chlorides, one-third of the sample was spiked with ⁸⁷Rb, ⁸⁴Sr, ¹⁴⁹Sm, and ¹⁴⁶Nd. Rb, Sr, and REEs were separated by conventional cation-exchange procedures. Sm and Nd were further separated in di-ethyl-hexyl orthophosphoric acid columns.

All isotopic measurements were made on a VG Sector multi-collector mass spectrometer at the University of Wyoming. An average ⁸⁷Sr/⁸⁶Sr isotopic ratio of 0.710251 ± 20 (2 standard deviations) was measured for NBS 987 Sr, and an average ¹⁴³Nd/¹⁴⁴Nd ratio of 0.511846 ± 11 (2 standard deviations) was measured for the La Jolla Nd standard. Uncertainties in Sr isotopic ratio measurements are ±0.00002 and uncertainties in Nd isotopic ratio measurements are ± 0.00001 (2 standard deviations). Blanks are 50 pg for Rb, Sr, Nd, and Sm, and no blank correction was made. Uncertainties in Rb, Sr, Nd, and Sm concentrations are ±2% of the measured value; uncertainties on initial ε_{Nd} are ± 0.3 epsilon units. The Nd model ages are calculated based upon the depleted mantle model of Goldstein et al. (1984).

*Sr concentration for Gali 3 by inductively coupled plasma-atomic emission spectroscopy (Table 1).

§Initial Nd and Sr isotopic ratios for 03OMB8 calculated for 153 Ma and for 210 Ma, due to the uncertain assignment of this sample to the Galice Formation.

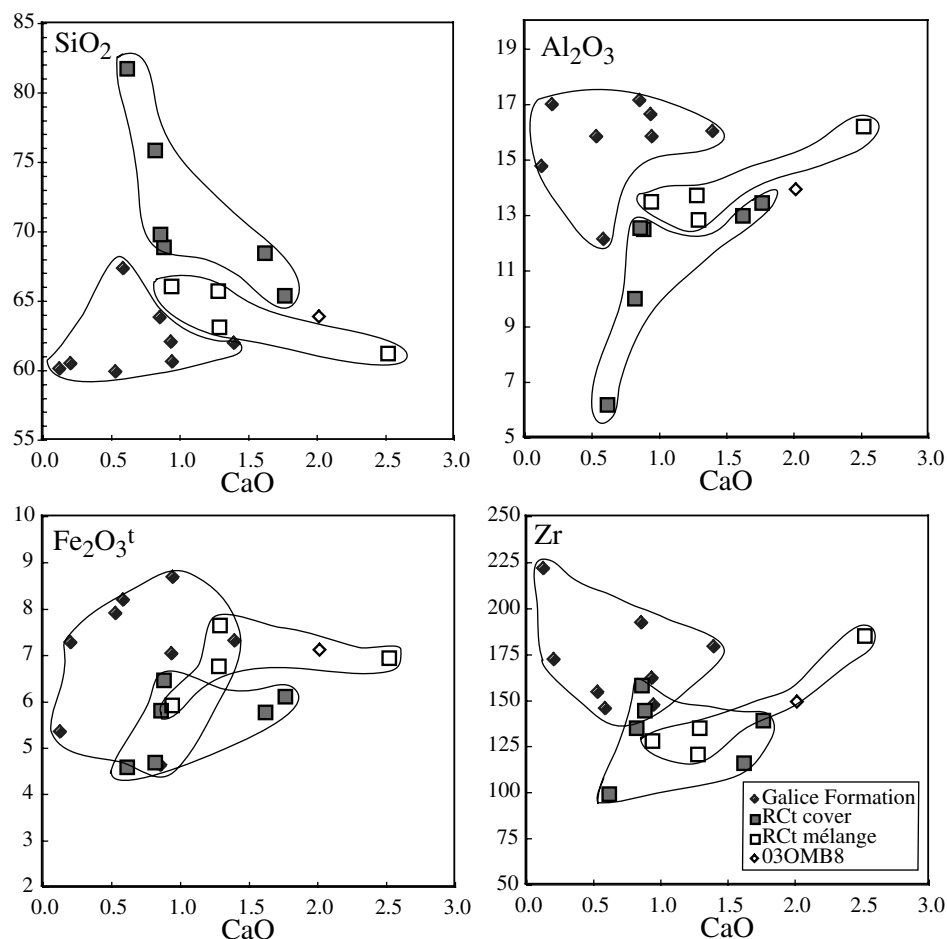


Figure 3. Geochemical compositions of Galice Formation argillites and Rattlesnake Creek terrane meta-argillites. Galice argillites are distinguished by lower SiO₂ and CaO, and higher Fe₂O₃^t, Al₂O₃, and Zr compared to Rattlesnake Creek terrane samples. The meta-argillite from the Rattlesnake Creek terrane cover sequences is more siliceous and has lower Al₂O₃ and Fe₂O₃^t than does meta-argillite from the serpentinite-matrix mélange.

lower SiO₂ and CaO, and higher Fe₂O₃^t, Al₂O₃, and Zr abundances. Meta-argillite from the inferred cover sequences of the Rattlesnake Creek terrane is more siliceous and has correspondingly lower Al₂O₃ and Fe₂O₃^t than does meta-argillite from the serpentinite-matrix mélange.

Two samples from the cover sequences of the Rattlesnake Creek terrane, DP1-62 and DP1-67, have higher SiO₂ and lower Al₂O₃ than found in all other samples from this study. These rocks are best described as siliceous or cherty meta-argillite, and there is a complete spectrum from meta-argillite to siliceous argillite to impure chert in the Rattlesnake Creek terrane. This range is true of meta-argillite from the serpentinite-matrix mélange as well as metamorphosed argillaceous rocks from the inferred cover sequences.

Sample 03OMB8, collected from an outcrop that has been mapped as Galice Formation (Klein, 1975, 1977; Petersen, 1982), is geochemically distinct from the other analyzed Galice samples. Although 03OMB8 falls within fields defined by the analyzed Rattlesnake Creek terrane samples, it has experienced lower-grade metamorphism than Rattlesnake Creek terrane metasedimentary rocks in the adjacent hanging-wall block of

the Orleans fault. We thus conclude that either this sample has an unusual composition for argillaceous rocks of the Galice Formation, or as discussed previously, this sample may be a fault-bounded slice of Condrey Mountain terrane, a third argillaceous unit that is widely exposed in a structural window (Hotz, 1979; Helper, 1986) east-northeast of Happy Camp, California.

Isotopic Data

Sm-Nd and Rb-Sr isotopic data are presented in Table 2; the ages used to calculate initial isotopic ratios are 153 Ma for samples from the Galice Formation and 210 Ma for samples from the Rattlesnake Creek terrane, respectively. Isotopic data for metamorphosed argillaceous rocks from the Galice Formation are more uniform than are the data for meta-argillite samples from the Rattlesnake Creek terrane. Galice samples (apart from 03OMB8) have initial ⁸⁷Sr/⁸⁶Sr of 0.7051–0.7071 and initial ε_{Nd} of –0.9 to –2.5 (Fig. 4). Meta-argillites of the Rattlesnake Creek terrane exhibit greater ranges both in initial ⁸⁷Sr/⁸⁶Sr (0.7001–0.7114) and initial ε_{Nd} (+4.7 to –8.3). The calculated initial ⁸⁷Sr/⁸⁶Sr ratio of 0.7001 is unrealistically low, suggest-

ing that Rb and/or Sr mobility has affected this and possibly other samples. Sample 03OMB8 is distinct from the other Galice samples, falling within the range defined by Rattlesnake Creek terrane samples with an initial Sr isotopic ratio of 0.7080 and initial ϵ_{Nd} of -7.0 . The range in $^{147}\text{Sm}/^{144}\text{Nd}$ exhibited both by Galice Formation and Rattlesnake Creek terrane samples ($^{147}\text{Sm}/^{144}\text{Nd} = 0.1018\text{--}0.1387$) extends to higher ratios than are typical of upper continental crust ($^{147}\text{Sm}/^{144}\text{Nd} = 0.090\text{--}0.125$).

Meta-argillites from the Rattlesnake Creek terrane cover sequence have in general higher initial $^{87}\text{Sr}/^{86}\text{Sr}$ and more negative initial ϵ_{Nd} than do meta-argillites from the serpentinite-matrix mélangé. Meta-argillites from the cover sequences also tend to have lower P_2O_5 than found in meta-argillite samples from the Rattlesnake Creek terrane serpentinite-matrix mélangé (Fig. 5A). Cover sequence meta-argillite sample BP4-3 is the exception; it falls within the range of Nd and Sr isotopic compositions defined by the meta-argillite samples collected from inferred mélangé blocks. Possibly we have misidentified this sample as part of the cover sequence, and it might instead have been collected from a very large mélangé block. However, this sample has much higher Sr and Ba than other cover sequence argillites (Table 2 and Fig. 5B) and one of the highest CaO and

Na_2O contents. These geochemical traits, which are consistent with a greater volcanogenic component, appear to correlate with its more radiogenic initial Nd isotopic ratio. It is possible, then, that this meta-argillite from the cover sequence incorporates a larger proportion of young, oceanic detritus than other meta-argillites from the cover sequence. A similar correlation of high Sr with radiogenic initial ϵ_{Nd} is observed for the meta-argillite sample from the serpentinite-matrix mélangé that exhibits the most radiogenic Nd isotopic ratio, sample BP391 (Fig. 5B).

DISCUSSION

Provenance of Galice Formation Argillaceous Rocks

The metamorphosed argillaceous rocks of the Galice Formation analyzed in this study are distinguished by their geochemical and isotopic homogeneity, despite their varying geographic locations and stratigraphic positions. The Sm-Nd isotopic data preserve evidence both for ancient continental crust and younger crust and/or mantle-derived components in these argillaceous rocks. Evidence for incorporation of the latter is preserved in the $^{147}\text{Sm}/^{144}\text{Nd}$ ratios of the samples, which range from 0.1101 to 0.1387. Half of the samples have ratios

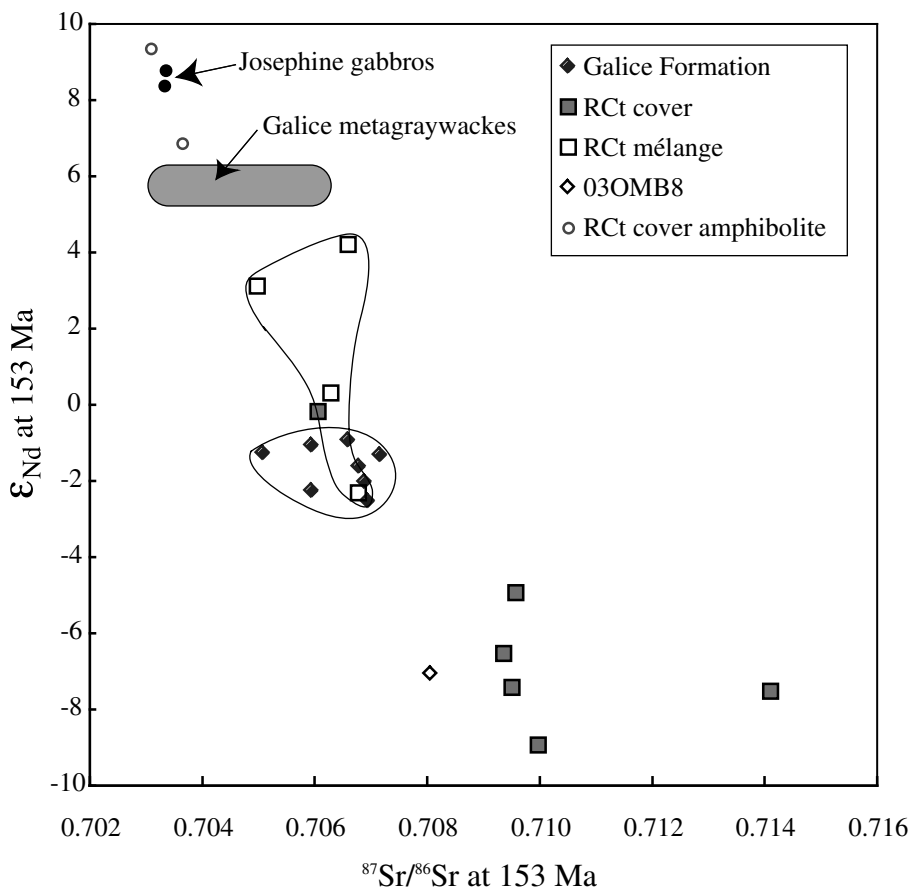


Figure 4. Nd and Sr isotopic data for Galice Formation and Rattlesnake Creek terrane metasedimentary rocks calculated at 153 Ma, the estimated time of Galice deposition. Galice Formation argillites have relatively uniform initial ϵ_{Nd} of -0.9 to -2.5 , and initial $^{87}\text{Sr}/^{86}\text{Sr}$ of $0.7051\text{--}0.7071$, distinct from the initial ϵ_{Nd} and $^{87}\text{Sr}/^{86}\text{Sr}$ of Galice (meta)graywackes. Rattlesnake Creek terrane meta-argillites have less uniform initial ϵ_{Nd} and $^{87}\text{Sr}/^{86}\text{Sr}$, and in general, cover sequence samples have higher initial $^{87}\text{Sr}/^{86}\text{Sr}$ and lower initial ϵ_{Nd} than do samples from the serpentinite-matrix mélangé. No metasedimentary sample has a depleted mantle signature like those exhibited by gabbros from the Josephine ophiolite (Shaw and Wasserburg, 1984) or Rattlesnake Creek terrane amphibolites from the cover sequence (C.D. Frost, unpublished data, 2003).

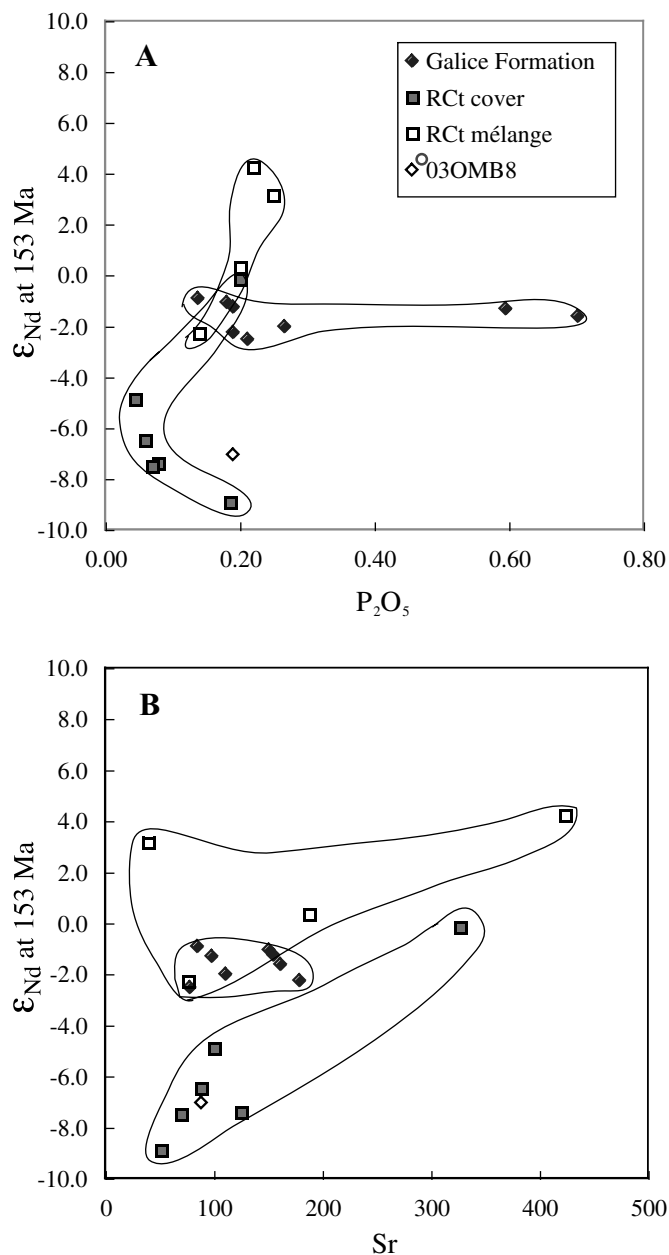


Figure 5. (A) Plot of P_2O_5 content (in wt. %) vs. ϵ_{Nd} at 153 Ma, showing generally lower P_2O_5 content of Rattlesnake Creek terrane cover sequence meta-argillites compared to Rattlesnake Creek terrane mélange and Galice argillaceous rocks. (B) Plot of Sr content (in ppm) vs. ϵ_{Nd} at 153 Ma, showing that the most radiogenic samples within the Rattlesnake Creek terrane cover and the Rattlesnake Creek terrane mélange also have high Sr and suggesting that these samples may have incorporated a greater volcanogenic component than the other samples within each group.

continental and mantle-derived sources: initial $^{87}Sr/^{86}Sr$ of between 0.7051 and 0.7071 are more radiogenic than depleted mantle and island-arc magmas, but less radiogenic than a North American cratonic source (Fig. 6).

Limited Nd and Sr isotopic data from metagraywackes of the Galice Formation provide an instructive comparison with our meta-argillite data. Initial Sr isotopic ratios of metagraywackes reported by Coleman (1972: $^{87}Sr/^{86}Sr = 0.7030\text{--}0.7066$) are on average less radiogenic than those of the meta-argillites. An analysis of Galice metagraywacke reported by Miller et al. (2003) yielded an initial ϵ_{Nd} of +5.6, considerably more radiogenic than the initial ϵ_{Nd} of -0.9 to -2.5 obtained from our argillaceous samples (Fig. 4). The Miller et al. (2003) sample also contained an abundant population of detrital zircons with an age of 153 Ma. Both the Sr and Nd isotopic compositions and the detrital zircon ages suggest that Galice Formation metagraywackes incorporate detritus from a Late Jurassic oceanic arc source, probably the Rogue–Chetco arc. Miller et al. (2003) documented a less well-defined peak in detrital zircon ages at 227 Ma and sparse older zircon, indicating that the metagraywacke also incorporated detritus from older sources, including sediment that ultimately was eroded from the North American Precambrian basement (Miller et al., 2003). Interpreting U–Pb detrital zircon ages from a larger number of Galice metagraywacke samples, Miller and Saleeby (1995) also concluded that the Galice Formation was deposited within the range of terrigenous input from a recycled continental source, and identified the older Klamath terranes as suitable sediment sources. The data presented in our study are consistent with the hypothesis of these workers that the turbidites of the Galice Formation contain both a young arc-derived component and an older cratonic source. However, the more negative ϵ_{Nd} of the argillaceous rocks compared to the metagraywacke sample analyzed by Miller et al. (2003) and more radiogenic initial Sr isotopic compositions of the argillaceous rocks compared to the metagraywackes analyzed by Coleman (1972) suggest that the proportions of detritus from various sources are different in the argillaceous rocks compared to the metagraywackes in this turbidite sequence.

higher than 0.125 and thus exceed $^{147}Sm/^{144}Nd$ ratios typical of continental crust (Fig. 6). However, the samples have slightly negative initial ϵ_{Nd} and Mesoproterozoic depleted mantle Nd model ages of 0.96–1.25 Ga. These model ages represent the weighted average crust-formation age of the sources that eroded and contributed detritus to the Galice Formation. They strongly imply that although the argillaceous rocks of the Galice Formation were deposited upon the Late Jurassic Josephine ophiolite, their sediment sources were not restricted to proximal arc materials but instead included detritus ultimately derived from Precambrian continental crust. The initial Sr isotopic compositions of the samples also suggest that they are a mixture of con-

Differences in initial ϵ_{Nd} for coarse-grained and fine-grained portions of turbidite flows have been documented in both modern (McLennan et al., 1989) and ancient (Frost and Coombs, 1989) environments. These differences may arise if

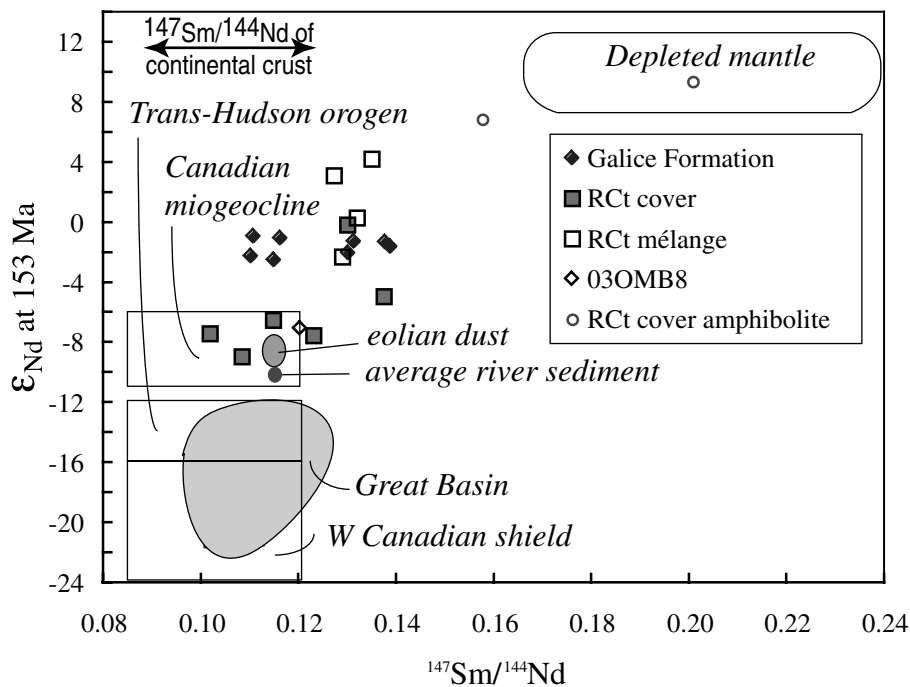


Figure 6. Plots of $^{147}\text{Sm}/^{144}\text{Nd}$ data vs. ϵ_{Nd} at 153 Ma for Galice and Rattlesnake Creek terrane meta-argillite samples and possible sediment sources. The Klamath metasedimentary samples have Sm-Nd isotopic characteristics that are intermediate between depleted mantle and North American crust. Fields for the latter include Neoproterozoic metasedimentary rocks of the Great Basin (Farmer and Ball, 1997), western Canadian shield and Trans-Hudson orogen (Chauvel et al., 1987; Boghossian et al., 1996), and Devonian to Jurassic Canadian miogeocline (Boghossian et al., 1996; Patchett and Gehrels, 1998). Rattlesnake Creek terrane cover sequence meta-argillites have Sm-Nd isotopic characteristics comparable to eolian dust and particulates from major river systems (Goldstein et al., 1984). Galice Formation argillite samples and meta-argillite from Rattlesnake Creek terrane serpentinite-matrix mélange have incorporated a greater proportion of juvenile detritus.

different source areas are shedding debris of contrasting grain size; for example, if coarser debris is eroding from proximal arcs and fine-grained material is carried from more distant source areas (i.e., as suspended particulate in rivers; Frost and Coombs, 1989). A second factor is the concentration or preferential breakdown of certain components such as volcanic glass or unstable minerals during weathering and transport, and their incorporation in the finer-grained sediment (McLennan et al., 1989). A third mechanism is the preferential incorporation of heavy minerals in the coarser-grained sediment during sedimentary transport and sorting. A modest enrichment of minerals such as zircon or monazite in the sand-sized portion of a turbidite flow can significantly affect its Sm and Nd budget and hence its Nd isotopic mass balance (Frost and Winston, 1987). Because the argillaceous rocks have the more unradiogenic initial ϵ_{Nd} compared to the metagraywacke sample, we conclude that the finer-grained rocks contain a greater proportion of recycled cratonic debris, material that may have been reduced to mud-sized particles during repeated episodes of erosion, transport, and deposition.

It is noteworthy, however, that in some cases, no correlation is observed between grain size and ϵ_{Nd} value. For example, in a study of Quesnel terrane strata in the Canadian Cordillera Unterschütz et al. (2002) documented variable ϵ_{Nd} for meta-sedimentary rocks of all grain sizes.

SEDIMENT SOURCES FOR META-ARGILLITES FROM THE RATTLESNAKE CREEK TERRANE MÉLANGE BASEMENT AND COVER SEQUENCE

With one exception, meta-argillites from the Rattlesnake Creek terrane cover sequence have initial Sr and Nd isotopic

compositions that are distinct from meta-argillite samples from the serpentinite-matrix mélange. Meta-argillites from Rattlesnake Creek terrane cover sequences are characterized by radiogenic initial $^{87}\text{Sr}/^{86}\text{Sr}$ of 0.7063–0.7114, negative initial ϵ_{Nd} from –4.5 to –8.3, and depleted mantle Nd model ages of 1.34–1.67 Ga. Meta-argillite samples from serpentinite-matrix mélange, however, have less radiogenic initial Sr isotope ratios (≤ 0.7061), less negative initial ϵ_{Nd} (+4.7 to –1.8), and younger model ages (0.69–1.26 Ga). As discussed below, these isotopic differences reflect a shift in the provenance of the argillaceous rocks from the basement to the cover portions of the Rattlesnake Creek terrane.

Wright and Wyld (1994) hypothesized that the mélange basement was formed by disruption of oceanic crust far removed from arc or continental landmasses, perhaps in an oceanic fracture zone setting. The blocks within the mélange are composed of rock types that make up the oceanic crust and uppermost mantle, including pillow basalt and diabase, gabbro, pyroxenite/peridotite, and amphibolite. The sedimentary rocks are restricted to chert, argillite, and limestone; no blocks contain clastic material of terrigenous or volcanic-arc provenance. The positive to only slightly negative initial ϵ_{Nd} and unradiogenic Sr isotopic compositions of the argillites analyzed in this study are consistent with an oceanic tectonic setting. Moreover, the samples all have elevated $^{147}\text{Sm}/^{144}\text{Nd}$ compared to typical continental crust (Fig. 6). However, no argillite sample has radiogenic Nd and unradiogenic Sr isotopic compositions of contemporary depleted mantle, so even in this oceanic setting, the sediments must include continental components. The absence of siliceous clastic rocks among the sedimentary blocks of the Rattlesnake Creek terrane mélange basement argues against its

formation within the range of terrigenous sedimentation. Although this distance is highly variable, depending upon the amount of sediment being discharged into the oceans by rivers, the width of the continental shelf and slope, and the potential for transport of sediment long distances in submarine canyons and along trenches, Patchett and Gehrels (1998) suggest that 1500 km is a reasonable limit. For sedimentation occurring beyond this distance, far-traveled hemipelagic sediment or eolian dust are potential sources of continental material.

The Nd isotopic compositions and Sm/Nd ratios of modern river particulates and eolian dusts are very uniform and yield depleted mantle Nd model ages of 1.70 ± 0.35 Ga (Goldstein et al., 1984; Jones et al., 1994). Correcting for radiogenic growth since Late Triassic time, this continental source of detritus would have had an initial ϵ_{Nd} of approximately -8 to -10 at the time the Rattlesnake Creek terrane mélange basement was deposited (Fig. 6). Assuming that continental material with this Nd isotopic composition is an appropriate estimate of far-traveled detritus that could have been incorporated into Rattlesnake Creek terrane basement argillite blocks, and taking into account the higher Nd concentration in atmospheric dusts and river particulates compared to oceanic crust, it is possible to estimate the proportion of continental material present in Rattlesnake Creek terrane basement argillite samples. Accordingly, the range of initial ϵ_{Nd} of the blocks analyzed ($\epsilon_{\text{Nd}} = +4.7$ to -1.8) can be modeled as mixtures of ~ 15 – 45% continental material and the remainder of juvenile oceanic sources. This result contrasts with the less radiogenic ϵ_{Nd} values of modern pelagic sediment in the central North Pacific Ocean. Jones et al. (1994) concluded that this pelagic sediment is composed almost entirely of eolian sediment and includes little to no juvenile detritus. In contrast, the high proportion of mantle-derived sources in Rattlesnake Creek terrane basement argillite blocks suggests that the inferred oceanic fracture zone setting of these argillites must have produced abundant argillaceous detritus of juvenile origin that was mixed in varying proportions with far-traveled continental sediment.

The Rattlesnake Creek terrane cover sequence that unconformably overlies the mélange basement was interpreted by Wright and Wyld (1994) as a volcanic-arc suite. The igneous rocks of the cover sequence have geochemical signatures suggesting an island-arc environment (Wright and Wyld, 1994). The Nd and Sr isotopic data from amphibolitic rocks (contact-metamorphosed metabasalt) of the cover sequence (C.D. Frost, unpublished data; Figs. 4 and 6) confirm the arc signature of these rocks. The quartzose and argillaceous nature of the sedimentary rocks of the cover sequence suggested to Wright and Wyld (1994) that the metasedimentary rocks of the cover sequence were likely derived from a terrigenous source, possibly Paleozoic rocks of western North America. The isotopic data for Rattlesnake Creek terrane meta-argillite samples presented here—namely, more radiogenic initial $^{87}\text{Sr}/^{86}\text{Sr}$, more negative initial ϵ_{Nd} , and generally lower $^{147}\text{Sm}/^{144}\text{Nd}$ for meta-argillites of the cover sequence compared to those of the mélange basement (Figs. 4 and 6)—are consistent with this general hypothe-

sis that continental input is more pronounced in the cover sequence than in the mélange basement.

We note a similarity both in absolute ϵ_{Nd} values and variability between the argillaceous rocks of the Rattlesnake Creek terrane cover sequence and Late Quaternary pelagic sediments from the Circum-Pacific rim analyzed by Jones et al. (1994). The latter were suggested to be composed of volcanic ash, hemipelagic sediments derived from volcanic arcs, and eolian loess. These fine-grained sediments are less radiogenic than modern turbidites from the same locations (McLennan et al., 1990). Jones et al. (1994) explained this discrepancy by noting that the turbidites are probably dominated by debris from island-arc sources, but that the finer pelagic sediment would contain both material from these sources of sediment and more distally derived continental loess.

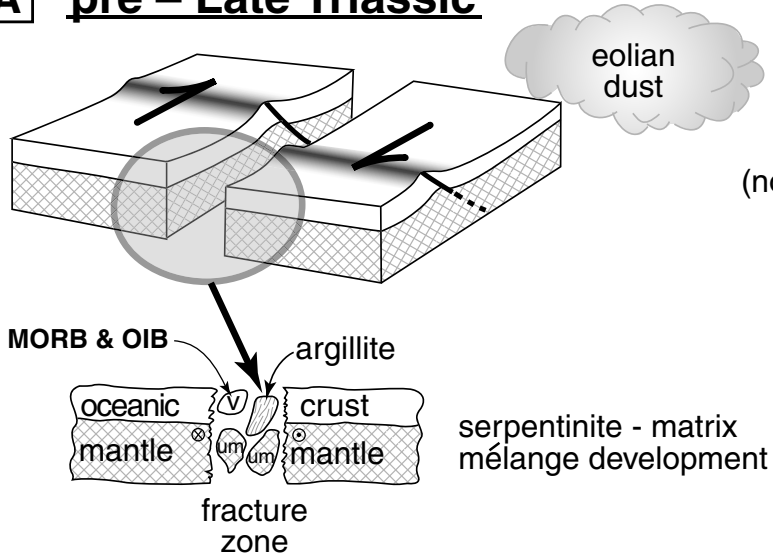
Our sample set from the Rattlesnake Creek terrane cover sequence includes samples with a range of SiO_2 and Al_2O_3 contents that vary from true argillite to cherty or siliceous argillite. The sample with the isotopic characteristics suggesting the greatest proportion of juvenile arc component, BP4-3, has geochemical characteristics expected of clastic rocks with a significant volcanogenic component, including relatively high Sr, CaO, Na_2O , and Al_2O_3 . Sample DP1-67, which has the second highest initial ϵ_{Nd} after sample BP4-3, is the most siliceous of the Rattlesnake Creek terrane cover sequence samples. Thus it appears that the range in isotopic compositions of meta-argillite samples from the Rattlesnake Creek terrane cover sequence reflects varying proportions of local arc and more distal continental components, the latter being more pronounced in the finer-grained, less siliceous samples.

Implications for Tectonic Evolution of Klamath Terranes

The lithologic and isotopic characteristics of the blocks of metamorphosed argillaceous rocks in the Rattlesnake Creek terrane are consistent with development of a serpentinite-matrix mélange distal from a continent. In addition, the presence of (meta)limestone blocks in the mélange suggests significant seafloor topography and the possibility that oceanic basement was exposed and available for weathering, and consequently was a source of juvenile detritus in the argillaceous rocks. These conclusions are consistent with the higher ϵ_{Nd} and lower initial $^{87}\text{Sr}/^{86}\text{Sr}$ ratios among these samples than would be expected if their source was entirely derived from a continental source. Thus, our data are consistent with the oceanic fracture-zone setting postulated by Wright and Wyld (1994) for the serpentinite-matrix mélange unit of the Rattlesnake Creek terrane (Fig. 7A).

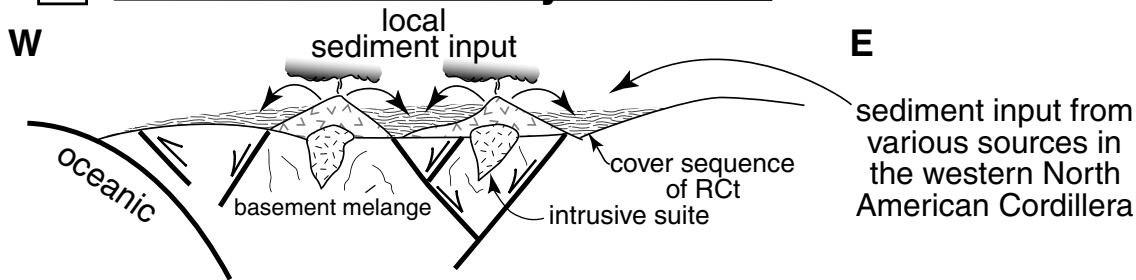
In contrast, the cover sequence of the Rattlesnake Creek terrane contains abundant evidence for deposition in an oceanic-arc setting (Wright and Wyld, 1994). However, argillaceous samples from the cover sequence exhibit Nd isotopic compositions typical of continental detritus, with little evidence for admixture of primitive-arc detritus (Fig. 6). The distinctly “continental” isotopic compositions of the argillites of the cover sequence may be explained by an absence of fine-grained arc

A pre – Late Triassic



intra-oceanic setting,
very distal from
continental sources
(note differential topography along
strike of the fracture zone:
a source of juvenile detritus)

B Late Triassic – Early Jurassic



C Late Jurassic

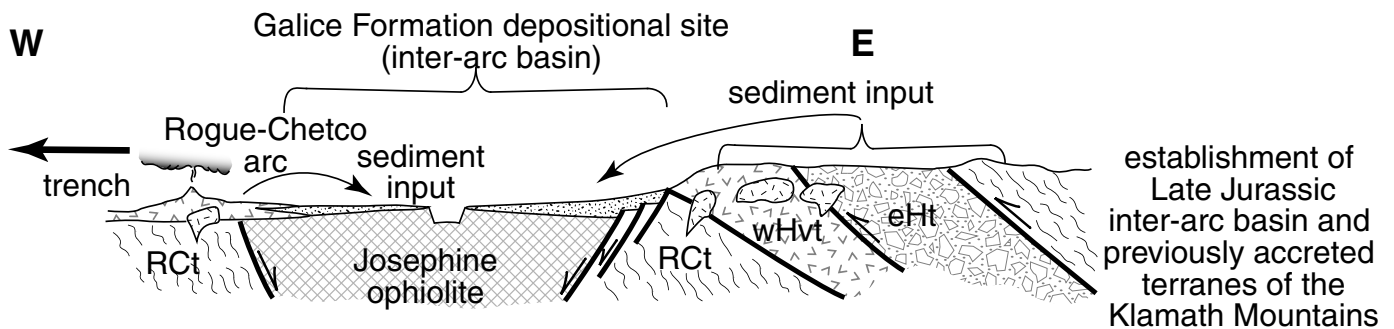


Figure 7. Inferred tectonic settings (pre-Late Triassic through Late Jurassic) for the argillaceous rocks analyzed in this study. (A) Development of serpentinite-matrix mélangé (basement of the Rattlesnake Creek terrane) in a pre-Late Triassic oceanic fracture zone; (B) Late Triassic–Early Jurassic oceanic-arc setting for deposition of the cover sequence of the Rattlesnake Creek terrane. (C) Development of the Late Jurassic, inter-arc Galice basin through transtensional rifting of older, previously accreted terranes of the Klamath Mountains.

detritus. For example, if the arc was composed primarily of lava erupted subaqueously rather than of abundant submarine debris-flow or epiclastic deposits, then little of this juvenile arc component may be incorporated into the cover sequence meta-argillites. An alternative explanation may lie in our sampling technique: we specifically tried to sample the finest grained rocks available at each locality. If the arc detritus was incorporated preferentially into sand-sized sediment, then such detrital rocks were preferentially excluded from the sample set.

By Middle Jurassic time, sedimentary rocks of the western Hayfork arc terrane were deposited directly on Rattlesnake Creek terrane rocks (Wright and Fahan, 1988; Donato et al., 1996). The western Hayfork terrane contains quartz-rich sedimentary rocks that suggest a position proximal to a continental landmass (Barnes et al., this volume, Chapter 10), presumably North America. Paleomagnetic data (Mankinen et al., 1989) show that by Middle Jurassic time, the Klamath province was close to its present latitudinal position relative to North America, although minor shifts are permissible. Therefore, the isotopic data support the concept that the Rattlesnake Creek terrane mélange formed in an oceanic setting. By the time the cover sequence was deposited, the Rattlesnake Creek terrane was presumably near a continental-affinity landmass (Fig. 7B). It subsequently became the basement for a near-margin, albeit oceanic-affinity, arc (western Hayfork terrane) in Middle Jurassic time. This inferred scenario thus suggests that the Middle Jurassic western Hayfork arc was not “exotic” to western North America and favors that this Middle Jurassic arc was west-facing (relative to present geographic coordinates).

The isotopic composition of metamorphosed argillaceous rocks from the Upper Jurassic Galice Formation stand in marked contrast to the meta-argillites of the Rattlesnake Creek terrane cover sequence. The relative homogeneity and intermediate compositions of the argillaceous rocks of the Galice Formation suggest significant and uniform mixing of arc and continental detritus. Whether the continental detritus was primary (i.e., directly from a continental drainage) or recycled (e.g., from terranes in the eastern Klamath Mountains) is more difficult to determine and will probably require thorough sampling of a variety of stratigraphic units (Fig. 7C). At least two explanations for the well-mixed nature of the argillaceous rocks of the Galice Formation are possible: (1) the continental component was part of the suspended load from riverine input direct from North America and was mixed with fine-grained, relatively juvenile input from proximal, outboard Rogue–Chetco arc as well as the Middle Jurassic inboard arc components (e.g., western Hayfork terrane); and (2) the source was entirely from the Klamath province, in which case mixing occurred in the source regions, which already contained arc and continental detritus (Miller and Saleeby, 1991; Gehrels and Miller, 2000; Wallin et al., 2000). In the latter case, no new input from continental drainages is necessary. There is no evidence for drainage systems that crossed the Great Basin during Jurassic time. Therefore, the first explanation implies either that the Klamath province was in a more southerly paleolatitude during Galice deposition, as suggested

by Wyld and Wright (2001), or that wind-borne detritus associated with Early Jurassic Navajo/Aztec-type sands reached the drainages that fed the Galice basin. In contrast to the first alternative, no implications about paleolatitude may be made from the second explanation because no external source of sedimentary detritus is necessary.

CONCLUSIONS

This study represents the first extensive Nd and Sr isotopic examination of metasedimentary rocks from the Klamath Mountains. Our results from the two terranes farthest outboard of the North American craton show that all of the sedimentary rocks of these oceanic terranes contain a significant continental component. The pre-Late Triassic serpentinite-matrix mélange of the Rattlesnake Creek terrane is interpreted as forming in an oceanic fracture zone. The continental component in its argillaceous rocks was apparently supplied by eolian processes. In contrast, the cover sequence of the Rattlesnake Creek terrane was deposited when the terrane was more proximal to a continental landmass, presumably North America, and its metasedimentary rocks are mixtures of varying proportions of volcanic-arc debris and river-borne terrigenous sediment. The Nd and Sr isotopic compositions of the argillaceous rocks of the Upper Jurassic Galice Formation are remarkably uniform, a particularly striking feature in view of the likelihood that sediment was shed into the Galice basin from both the previously accreted terranes of the Klamath Mountains as well as the outboard, west-facing Rogue–Chetco oceanic arc.

The isotopic data presented here are consistent with the general observation that sedimentary rocks from accreted terranes preserve a stronger signal of continental input than do the contemporaneous igneous rocks within the terrane. Although this observation has been made previously (i.e., Samson et al., 1991; Patchett and Gehrels, 1998), the results of this study suggest that variations in the homogeneity of the isotopic compositions also preserve important information. In particular, the striking homogeneity of Nd and Sr isotopic compositions of Galice argillaceous metasedimentary samples contrasts with the variability in Nd isotopic composition observed in metasedimentary rocks of other oceanic terranes. For example, the variability of initial ϵ_{Nd} composition of strata from the Quesnel terrane was explained by differing proportions of primitive and evolved sources present along the North American continental margin (Unterschutz et al., 2002). This terrane was interpreted to lie on or near the North American margin, such that there was no opportunity for homogenization of these sources by sedimentary processes. In contrast, the remarkable uniformity of isotopic compositions of Galice Formation argillaceous rocks requires that arc and continental detritus were well homogenized prior to deposition upon the Josephine ophiolite. Although the ability of major rivers to homogenize the isotopic composition of sediments they transport is well known (Goldstein et al., 1984), the processes resulting in isotopic uniformity of sediment in an arc terrane setting clearly require further investigation.

Although the present study represents an important first step, a more detailed understanding of sediment sources, the importance of sediment recycling, and paleogeographic and tectonic positions of Klamath Mountains terranes requires additional detailed investigations. In particular, isotopic characteristics of a variety of lithologic units from the other Klamath terranes will help to determine whether the continental material contributed to the western Klamath and Rattlesnake Creek terranes was derived from adjacent, previously accreted terranes, or whether it was delivered directly from the North American craton. A corollary study of the collage of time-correlative tectonostratigraphic terranes in the western Sierra Nevada would also be interesting and potentially informative in the evaluation of contrasting tectonic models for the Klamath Mountains and western Sierra Nevada. For example, comparison of lithologic, geochemical, and isotopic characteristics of the Upper Jurassic Galice and Mariposa Formations may help distinguish between postulated tectonic accretion scenarios (e.g., Schweickert and Cowan, 1975; Harper and Wright, 1984; Ingersoll and Schweickert, 1986). For nearly a hundred years since Diller (1907) originally suggested that the Galice and Mariposa Formations are correlative units, it has been recognized that a thorough understanding of the tectonic setting and depositional history of these important Upper Jurassic stratigraphic units is fundamental to the mid-Mesozoic history of the continental margin of western U.S. Cordillera.

ACKNOWLEDGMENTS

Melanie Barnes and Jim Lehane produced the bulk-rock chemical analyses. Partial support was provided by National Science Foundation grants EAR-9902807, EAR-9902912, EAR-9117103, and EAR-8720141. We thank Scott Samson and Jonathan Patchett for very helpful reviews.

APPENDIX. SAMPLE LOCALITIES WITH UTM COORDINATES

Sample	UTM coordinates (easting, northing)
Argillaceous rocks of the Rattlesnake Creek terrane: inferred cover sequence	
DP1-58	0440761, 4629350
DP1-61	0438312, 4628546
DP1-62	0437732, 4692112
DP1-67	0437865, 4629149
BP4-3	0453336, 4611678
BP388	0453163, 4610102
Argillaceous rocks of the Rattlesnake Creek terrane: inferred blocks in serpentinite-matrix mélangé	
03OMB1	0458847, 4580800
03OMB3	0458350, 4578617
03OMB10	0455807, 4646294
BP391	0449840, 4615794

Sample	UTM coordinates (easting, northing)
Argillaceous rocks of the Upper Jurassic Galice Formation	
GALI1A	434795, 4635549
GALI1B	434795, 4635549
GALI2	434848, 4635482
GALI3	434610, 4635529
GALI4	438774, 4642048
03OMB4	0446277, 4566604
03OMB5	0445357, 4564287
03OMB6	0457702, 4591098
03OMB8	0467288, 4625712

REFERENCES CITED

- Armstrong, R.L., 1988, Mesozoic and early Cenozoic magmatic evolution of the Canadian Cordillera, in Clark, S.P., et al., eds., Processes in continental lithosphere deformation: Boulder, Colorado, Geological Society of America Special Paper 218, p. 55–91.
- Barnes, C.G., Allen, C.M., Hoover, J.D., and Brigham, R.H., 1990, Magmatic components of a tilted plutonic system, Klamath Mountains, California, in Anderson, J.L., ed., The nature and origin of Cordilleran magmatism: Boulder, Colorado, Geological Society of America Memoir 174, p. 331–346.
- Barnes, C.G., Petersen, S.W., Kistler, R.W., Prestvik, T., and Sundvoll, B., 1992a, Tectonic implications of isotopic variation among Jurassic and early Cretaceous plutons, Klamath Mountains: Geological Society of America Bulletin, v. 104, p. 117–126, doi: 10.1130/0016-7606(1992)104<0117:TIOIVA>2.3.CO;2.
- Barnes, C.G., Barnes, M.A., and Kistler, R.W., 1992b, Petrology of the Caribou Mountain pluton, Klamath Mountains, California: Journal of Petrology, v. 33, p. 95–124.
- Barnes, C.G., Johnson, K., Barnes, M.A., Prestvik, T., Kistler, R.W., and Sundvoll, B., 1995, The Grayback pluton: Magmatism in a Jurassic back-arc environment, Klamath Mountains, Oregon: Journal of Petrology, v. 36, p. 397–415.
- Barnes, C.G., Mars, E.V., Swapp, S., and Frost, C.D., 2006, this volume (Chapter 10), Petrology and geochemistry of the Middle Jurassic Ironside Mountain batholith: Evolution of potassic magmas in a primitive arc setting, in Snoke, A.W., and Barnes, C.G., eds., Geological studies in the Klamath Mountains province, California and Oregon: A volume in honor of William P. Irwin: Boulder, Colorado, Geological Society of America Special Paper 410, doi: 10.1130/2006.2410(10).
- Boghossian, N.D., Patchett, P.J., Ross, G.M., and Gehrels, G.E., 1996, Nd isotopes and the source of sediments in the miogeocline of the Canadian Cordillera: Journal of Geology, v. 104, p. 259–277.
- Bushey, J.C., Snoke, A.W., Barnes, C.G., and Frost, C.D., 2006, this volume, Geology of the Bear Mountain intrusive complex, Klamath Mountains, California, in Snoke, A.W., and Barnes, C.G., eds., Geological studies in the Klamath Mountains province, California and Oregon: A volume in honor of William P. Irwin: Boulder, Colorado, Geological Society of America Special Paper 410, doi: 10.1130/2006.2410(14).
- Chauvel, C., Arndt, N.T., Kielinzcuk, S., and Thom, A., 1987, Formation of Canadian 1.9 Ga old continental crust: Nd isotopic data: Canadian Journal of Earth Sciences, v. 24, p. 396–406.
- Coleman, R.G., 1972, The Colebrook Schist of southwestern Oregon and its relation to the tectonic evolution of the region: Washington, D.C., U.S. Geological Survey Bulletin 1339, 61 p.
- Coney, P.J., Jones, D.L., and Monger, J.W.H., 1980, Cordilleran suspect terranes: Nature, v. 288, p. 329–333, doi: 10.1038/288329a0.
- Creaser, R.A., Erdmer, P., Stevens, R.A., and Grant, S.L., 1997, Tectonic affinity of Nisutlin and Anvil assemblage strata from the Teslin tectonic zone,

- northern Canadian Cordillera: Constraints from neodymium isotope and geochemical evidence: *Tectonics*, v. 16, p. 107–121, doi: 10.1029/96TC03317.
- Davis, G.A., Monger, J.W.H., and Burchfiel, B.C., 1978, Mesozoic construction of the Cordilleran “collage,” central British Columbia to central California, in Howell, D.G., and McDougall, K.A., eds., *Mesozoic paleogeography of the western United States*, Pacific Coast Paleogeography Symposium 2: Los Angeles, Pacific Section, Society of Economic Paleontologists and Mineralogists, p. 1–32.
- Diller, J.S., 1907, The Mesozoic sediments of southwestern Oregon: *American Journal of Science*, fourth series, v. 23, p. 401–421.
- Donato, M.M., Barnes, C.G., and Tomlinson, S.L., 1996, The enigmatic Applegate Group of southwestern Oregon: Age, correlation, and tectonic affinity: *Oregon Geology*, v. 58, p. 79–91.
- Farmer, G.L., and Ball, T.T., 1997, Sources of Middle Proterozoic to Early Cambrian siliciclastic sedimentary rocks in the Great Basin: A Nd isotope study: *Geological Society of America Bulletin*, v. 109, p. 1193–1205, doi: 10.1130/0016-7606(1997)109<1193:SOMPTE>2.3.CO;2.
- Frost, C.D., and Coombs, D.S., 1989, Nd isotope character of New Zealand sediments: Implications for terrane concepts and crustal evolution: *American Journal of Science*, v. 289, p. 744–770.
- Frost, C.D., and Winston, D., 1987, Nd isotope systematics of coarse- and fine-grained sediments: Examples from the Middle Proterozoic belt—Purcell supergroup: *Journal of Geology*, v. 95, p. 309–327.
- Garcia, M.O., 1979, Petrology of the Rogue and Galice Formations, Klamath Mountains, Oregon: Identification of a Jurassic island arc sequence: *Journal of Geology*, v. 86, p. 29–41.
- Gehrels, G.E., and Miller, M.M., 2000, Detrital zircon geochronologic study of upper Paleozoic strata in the eastern Klamath terrane, northern California, in Soreghan, M.J., and Gehrels, G.E., eds., *Paleozoic and Triassic paleogeography and tectonics of western Nevada and northern California*: Boulder, Colorado, Geological Society of America Special Paper 347, p. 99–107.
- Goldstein, S.L., O’Nions, R.K., and Hamilton, P.J., 1984, A Sm-Nd isotopic study of atmospheric dusts and particulates from major river systems: *Earth and Planetary Science Letters*, v. 70, p. 221–236, doi: 10.1016/0012-821X(84)90007-4.
- Gribble, R.F., Barnes, C.G., Donato, M.M., Hoover, J.D., and Kistler, R.W., 1990, Geochemistry and intrusive history of the Ashland pluton, Klamath Mountains, California and Oregon: *Journal of Petrology*, v. 31, p. 883–923.
- Harper, G.D., 1980, The Josephine ophiolite—Remains of a Late Jurassic marginal basin in northwestern California: *Geology*, v. 8, p. 333–337, doi: 10.1130/0091-7613(1980)<333:TJOOAL>2.0.CO;2.
- Harper, G.D., 1983, A depositional contact between the Galice Formation and a Late Jurassic ophiolite in northwestern California and southwestern Oregon: *Oregon Geology*, v. 45, p. 3–7.
- Harper, G.D., 1984, The Josephine ophiolite: *Geological Society of America Bulletin*, v. 95, p. 1009–1026, doi: 10.1130/0016-7606(1984)95<1009:TJONC>2.0.CO;2.
- Harper, G.D., and Wright, J.E., 1984, Middle to Late Jurassic tectonic evolution of the Klamath Mountains, California-Oregon: *Tectonics*, v. 3, p. 759–772.
- Harper, G.D., Saleeby, J.B., and Norman, E.A.S., 1985, Geometry and tectonic setting of sea-floor spreading for the Josephine ophiolite, and implications for Jurassic accretionary events along the California margin, in Howell, D.G., ed., *Tectonostratigraphic terranes of the Circum-Pacific region*: Houston, Circum-Pacific Council for Energy and Mineral Resources, Earth Science Series 1, p. 239–257.
- Helper, M.A., 1986, Deformation and high P/T metamorphism in the central part of the Condrey Mountain window, north-central Klamath Mountains, California and Oregon, in Evans, B.W., and Brown, E.H., eds., *Blueschists and eclogites*: Boulder, Colorado, Geological Society of America Memoir 164, p. 125–141.
- Hill, L.B., 1985, Metamorphic, deformational, and temporal constraints on terrane assembly, northern Klamath Mountains, California, in Howell, D.G., ed., *Tectonostratigraphic terranes of the Circum-Pacific region*: Houston, Circum-Pacific Council for Energy and Mineral Resources, Earth Science Series 1, p. 173–186.
- Hotz, P.E., 1979, Regional metamorphism in the Condrey Mountain quadrangle, north-central Klamath Mountains, California: Reston, Virginia, U.S. Geological Survey Professional Paper 1086, 25 p.
- Imlay, R.W., 1959, Succession and speciation of the pelecypod *Aucella*: Washington, D.C., U.S. Geological Survey Professional Paper 314-G, p. 155–169, pls. 16–19.
- Imlay, R.W., 1980, Jurassic paleobiogeography of the conterminous United States in its continental setting: Reston, Virginia, U.S. Geological Survey Professional Paper 1062, 134 p.
- Ingersoll, R.V., and Schweickert, R.A., 1986, A plate-tectonic model for Late Jurassic ophiolite genesis, Nevadan orogeny and forearc initiation, northern California: *Tectonics*, v. 5, p. 901–912.
- Irwin, W.P., 1972, Terranes of the western Paleozoic and Triassic belt in the southern Klamath Mountains, California: Washington, D.C., U.S. Geological Survey Professional Paper 800-C, p. C103–C111.
- Irwin, W.P., 1994, Geologic map of the Klamath Mountains, California and Oregon: Reston, Virginia, U.S. Geological Survey, Miscellaneous Investigations Map I-2148, scale 1:500,000, 2 sheets.
- Irwin, W.P., and Wooden, J.L., 1999, Plutons and accretionary episodes of the Klamath Mountains, California and Oregon: Reston, Virginia, U.S. Geological Survey Open-File Report 99–374, 1 sheet.
- Jones, C.E., Halliday, A.N., Rea, D.K., and Owen, R.M., 1994, Neodymium isotopic variations in North Pacific modern silicate sediment and the insignificance of detrital REE contributions to seawater: *Earth and Planetary Science Letters*, v. 127, p. 55–66, doi: 10.1016/0012-821X(94)90197-X.
- Klein, C.W., 1975, Structure and petrology of a southeastern portion of the Happy Camp quadrangle, Siskiyou County, northwest California [Ph.D. dissertation]: Cambridge, Massachusetts, Harvard University, 288 p.
- Klein, C.W., 1977, Thrust plates of the north-central Klamath Mountains near Happy Camp, California: California Division of Mines and Geology Special Report, v. 129, p. 23–26.
- MacDonald, J.H., Jr., Harper, G.D., and Zhu, B., 2006, this volume, Petrology, geochemistry, and provenance of the Galice Formation, Klamath Mountains, Oregon and California, in Snoke, A.W., and Barnes, C.G., eds., *Geological studies in the Klamath Mountains province, California and Oregon: A volume in honor of William P. Irwin*: Boulder, Colorado, Geological Society of America Special Paper 410, doi: 10.1130/2006.2410(04).
- Mankinen, E.A., Irwin, W.P., and Gromme, C.S., 1989, Paleomagnetic study of the eastern Klamath terrane, California, and implications for the tectonic history of the Klamath Mountains province: *Journal of Geophysical Research*, v. 94, p. 10,444–10,472.
- Masi, U., O’Neil, J.R., and Kistler, R.W., 1981, Stable isotope systematics in Mesozoic granites of central and northern California and southwestern Oregon: *Contributions to Mineralogy and Petrology*, v. 76, p. 116–126, doi: 10.1007/BF00373691.
- McLennan, S.M., McCulloch, M.T., Taylor, S.R., and Maynard, J.B., 1989, Effects of sedimentary sorting on neodymium isotopes in deep-sea turbidites: *Nature*, v. 337, p. 547–549, doi: 10.1038/337547a0.
- McLennan, S.M., McCulloch, M.T., Taylor, S.R., and Maynard, J.B., 1990, Geochemical and Nd-Sr isotopic composition of deep-sea turbidites: Crustal evolution and plate tectonic associations: *Geochimica et Cosmochimica Acta*, v. 54, p. 2015–2050, doi: 10.1016/0016-7037(90)90269-Q.
- Miller, J., Miller, R., Wooden, J., and Harper, G., 2003, Geochronologic links between the Ingalls ophiolite, North Cascades, Washington and the Josephine ophiolite, Klamath Mts., Oregon and California: *Geological Society of America Abstracts with Programs*, v. 35, p. 113.
- Miller, M.M., and Saleeby, J.B., 1987, Detrital zircon studies of the Galice Formation: Common provenance of strata overlying the Josephine ophiolite and Rogue island arc, W. Klamath Mtns. terrane: *Geological Society of America Abstracts with Programs*, v. 19, p. 772–773.
- Miller, M.M., and Saleeby, J.B., 1991, Continental detrital zircon in Carboniferous ensimatic arc rocks, Bragdon Formation, eastern Klamath terrane,

- northern California: *Geological Society of America Bulletin*, v. 103, p. 268–276, doi: 10.1130/0016-7606(1991)103<0268:CDZICE>2.3.CO;2.
- Miller, M.M., and Saleeby, J.B., 1995, U-Pb geochronology of detrital zircon from Upper Jurassic synorogenic turbidites, Galice Formation, and related rocks, western Klamath Mountains: Correlation and Klamath Mountains provenance: *Journal of Geophysical Research*, v. 100, p. 18,045–18,058, doi: 10.1029/95JB00761.
- Park-Jones, R., 1988, Sedimentology, structure and geochemistry of the Galice Formation: Sediment fill of a back-arc basin and island arc in the western Klamath Mountains [M.S. thesis]: Albany, State University of New York, 165 p.
- Patchett, P.J., and Gehrels, G.E., 1998, Continental influence on Canadian Cordilleran terranes from Nd isotopic study, and significance for crustal growth processes: *Journal of Geology*, v. 106, p. 269–280.
- Petersen, S.W., 1982, Geology and petrology around Titus Ridge, north-central Klamath Mountains, California [M.S. thesis]: Eugene, University of Oregon, 73 p.
- Petersen, S.W., Barnes, C.G., and Hoover, J.D., 1991, The Billy's Peak mafic complex of the Trinity sheet, California: Roots of a Paleozoic island arc, in Cooper, J.D., and Stevens, C.H., eds., *Paleozoic paleogeography of the western United States II: Los Angeles, Pacific Section, Society of Economic Paleontologists and Mineralogists*, v. 67, p. 625–633.
- Saleeby, J.B., and Harper, G.D., 1993, Tectonic relations between the Galice Formation and the Condrey Mountain Schist, Klamath Mountains, northern California, in Dunne, G.C., and McDougall, K.A., eds., *Mesozoic paleogeography of the western United States II: Los Angeles, Pacific Section, Society of Economic Paleontologists and Mineralogists*, v. 71, p. 61–80.
- Saleeby, J.B., Harper, G.D., Snoke, A.W., and Sharp, W.D., 1982, Time relations and structural-stratigraphic patterns in ophiolite accretion, west-central Klamath Mountains, California: *Journal of Geophysical Research*, v. 87, p. 3831–3848.
- Samson, S.D., and Patchett, P.J., 1991, The Canadian Cordillera as a modern analogue of Proterozoic crustal growth: *Australian Journal of Earth Sciences*, v. 38, p. 595–611.
- Samson, S.D., Patchett, P.J., McClelland, W.C., and Gehrels, G.E., 1991, Nd isotopic characterization of metamorphic rocks in the Coast Mountains, Alaskan and Canadian Cordillera: Ancient crust bounded by juvenile terranes: *Tectonics*, v. 10, p. 770–780.
- Schweickert, R.A., and Cowan, D.S., 1975, Early Mesozoic tectonic evolution of the western Sierra Nevada, California: *Geological Society of America Bulletin*, v. 86, p. 1329–1336, doi: 10.1130/0016-7606(1975)86<1329:EMTEOT>2.0.CO;2.
- Secor, D.T., Jr., Samson, S.L., Snoke, A.W., and Palmer, A.R., 1983, Confirmation of the Carolina slate belt as an exotic terrane: *Science*, v. 221, p. 649–651.
- Shaw, H.F., and Wasserburg, G.J., 1984, Isotopic constraints on the origin of Appalachian mafic complexes: *American Journal of Science*, v. 284, p. 319–329.
- Silberling, N.J., Jones, D.L., Blake, M.C., Jr., and Howell, D.G., 1987, Lithotectonic terrane map of the western conterminous United States: Reston, Virginia, U.S. Geological Survey MF-1874-C, scale 1:2,500,000, with 20-p. pamphlet.
- Snoke, A.W., 1977, A thrust plate of ophiolitic rocks in the Preston Peak area, Klamath Mountains, California: *Geological Society of America Bulletin*, v. 88, p. 1641–1659, doi: 10.1130/0016-7606(1977)88<1641:ATPOOR>2.0.CO;2.
- Unterschutz, J.L.E., Creaser, R.A., Erdmer, P., Thompson, R.I., and Daughtry, K.L., 2002, North American margin origin of Quesnel terrane strata in the southern Canadian Cordillera: Inferences from geochemical and Nd isotopic characteristics of Triassic metasedimentary rocks: *Geological Society of America Bulletin*, v. 114, p. 462–475, doi: 10.1130/0016-7606(2002)114<0462:NAMOOQ>2.0.CO;2.
- Wagner, D.L., and Saucedo, G.J., compilers, 1987, Geologic map of the Weed quadrangle, California: California Division of Mines and Geology Regional Geologic Map Series, Map 4A, scale 1:250,000.
- Wallin, E.T., and Metcalf, R.V., 1998, Supra-subduction zone ophiolite formed in an extensional forearc: Trinity terrane, Klamath Mountains, California: *Journal of Geology*, v. 106, p. 591–608.
- Wallin, E.T., Noto, R.C., and Gehrels, G.E., 2000, Provenance of the Antelope Mountain Quartzite, Yreka terrane, California: Evidence for large-scale late Paleozoic sinistral displacement along the North American Cordilleran margin and implications for the mid-Paleozoic fringing-arc model, in Soreghan, M.J., and Gehrels, G.E., eds., *Paleozoic and Triassic paleogeography and tectonics of western Nevada and northern California: Boulder, Colorado, Geological Society of America Special Paper 347*, p. 119–131.
- Wright, J.E., and Fahan, M.R., 1988, An expanded view of Jurassic orogenesis in the western United States Cordillera: Middle Jurassic (pre-Nevadan) regional metamorphism and thrust faulting within an active arc environment, Klamath Mountains, California: *Geological Society of America Bulletin*, v. 100, p. 859–876, doi: 10.1130/0016-7606(1988)100<0859:AEVOJO>2.3.CO;2.
- Wright, J.E., and Wyld, S.J., 1986, Significance of xenocrystic Precambrian zircon contained within the southern continuation of the Josephine ophiolite: Devils Elbow ophiolite remnant, Klamath Mountains, northern California: *Geology*, v. 14, p. 671–674, doi: 10.1130/0091-7613(1986)14<671:SOXPZC>2.0.CO;2.
- Wright, J.E., and Wyld, S.J., 1994, The Rattlesnake Creek terrane, Klamath Mountains, California: An early Mesozoic volcanic arc and its basement of tectonically disrupted oceanic crust: *Geological Society of America Bulletin*, v. 106, p. 1033–1056, doi: 10.1130/0016-7606(1994)106<1033:TRCTKM>2.3.CO;2.
- Wyld, S.J., and Wright, J.E., 1988, The Devils Elbow ophiolite remnant and overlying Galice Formation: New constraints on the Middle to Late Jurassic evolution of the Klamath Mountains, California: *Geological Society of America Bulletin*, v. 100, p. 29–44, doi: 10.1130/0016-7606(1988)100<0029:TDEORA>2.3.CO;2.
- Wyld, S.J., and Wright, J.E., 2001, New evidence for Cretaceous strike-slip faulting in the United States Cordillera and implications for terrane-displacement, deformation patterns, and plutonism: *American Journal of Science*, v. 301, p. 150–181.
- Yule, J.D., 1996, Geologic and tectonic evolution of Jurassic marginal ocean basin lithosphere, Klamath Mountains, Oregon [Ph.D. dissertation]: Pasadena, California Institute of Technology, 308 p.